

2024

Impact Report

Opportunities
for Williamson & Burnet Counties



A Letter From Our Executive Director

Hello Friends,

Thank you for contributing to a successful 2024. Many of you have faced challenges such as high inflation, slow economic gains, and cultural divide. Despite these challenges our team at Opportunities for Williamson and Burnet Counties (OWBC) remained steadfast in serving our community's most vulnerable. I am extremely proud of the dedicated staff who have risen to the challenge. Their perseverance in serving our community is truly commendable.



I especially applaud our Meals on Wheels staff for ensuring our clients receive fresh, hot meals and our volunteers for delivering the meals despite the increase in need and rising costs for delivery. I applaud our Head Start leaders, center directors, and teachers who continue to provide loving care to children despite industry-wide staffing shortages. I deeply appreciate our Community Services team for managing increased funding responsibilities.

I extend my gratitude to our Senior Leaders, Finance, Human Resources, and Administrative Staff for keeping our operations running smoothly despite the rising costs of insurance, supplies, and overall operational costs. I am also grateful to our Board members, volunteers, donors, community foundations, and corporate partners for their generosity. Your support, whether through time, talent, or financial contributions, has been instrumental in meeting the needs of our community. The OWBC team will always be grateful for your kindness.

As we look ahead to 2025, navigating the current economic turbulence will be challenging not only for those in need but also for the organizations that support them. I believe OWBC is well-prepared for this challenge thanks to our resolute staff, Board, and strong community partnerships. With continued resolve, we will provide early childhood education, financial assistance, utility assistance, family advocacy, and nutrition services to those who rely on us. Together, we will endure.

Warm regards,
Marco Cruz, Executive Director

Who We Are

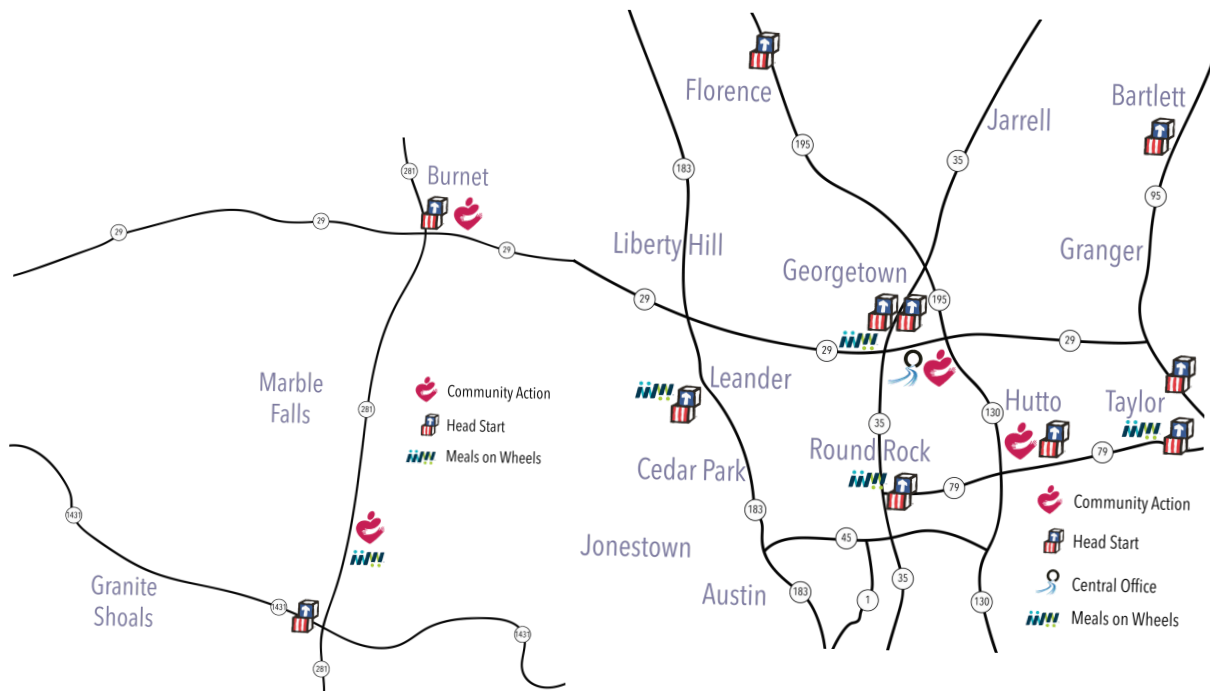
OUR VISION

A healthy, educated community in which all people live independently and with dignity

OUR MISSION

To empower children, families, and seniors to achieve and maintain independence by partnering with area organizations to provide education, nutrition, and community support

WHERE WE SERVE



Our Impact

5,163

TOTAL CLIENTS SERVED

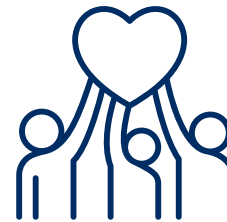


\$215,073

TOTAL INDIVIDUAL DONATIONS

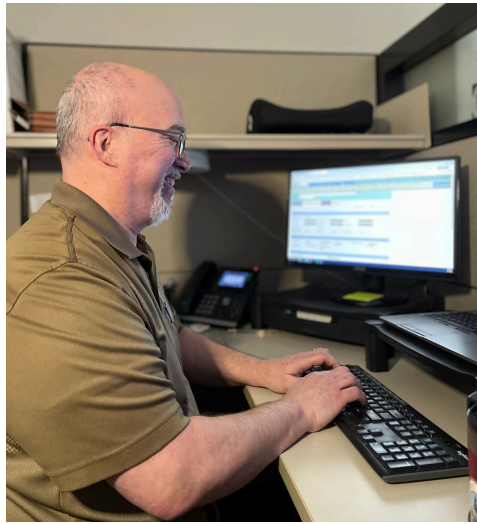
1,320+

TOTAL VOLUNTEERS



\$2,086,117

TOTAL IN-KIND DONATIONS



Finance

Statement of Activities

Grants & Contracts	\$14,284,374
In-Kind Donations	2,086,117
Program Services	8,569
Contributions & Other Income	880,140
Total Revenues	\$17,259,200

Head Start	\$11,330,608
Meals on Wheels	3,134,550
Community Services	1,908,800
General & Admin	93,629
Fundraising	76,490

Total Expenses	\$16,544,077
-----------------------	---------------------

*Affordable Housing services now provided by the Texas Housing Foundation

Statement of Financial Position

Cash/Investments	\$4,190,905
Accounts Receivable	1,535,394
Pre-paid Expenses	202,122
Property & Equipment (net)	6,742,555
Other Assets	399,875

Total Assets	\$13,070,851
---------------------	---------------------

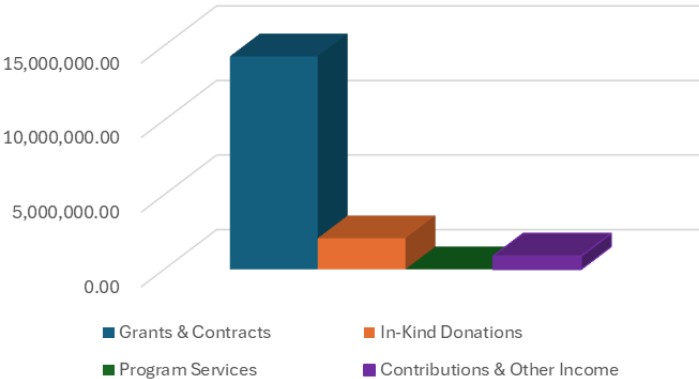
Current Liabilities	\$1,664,882
Long-Term Liabilities	2,134,248

Total Liabilities	\$3,799,130
--------------------------	--------------------

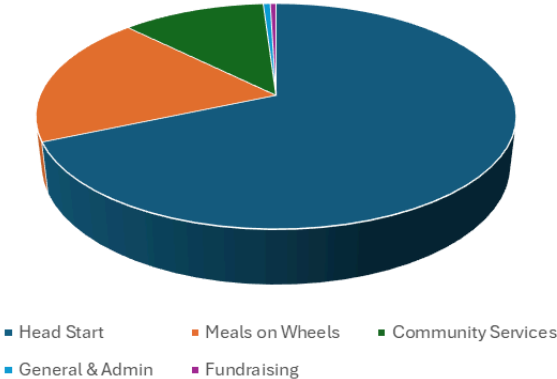
Net Assets	\$9,271,720
-------------------	--------------------

Total Liabilities & Net Assets	\$13,070,851
--------------------------------	--------------

Revenue



Expenditures



Community Services

The Community Services programs are what make OWBC a Community Action Agency (CAA). As the area's CAA, Community Services offers two programs to assist residents in Williamson and Burnet Counties: the Energy Assistance Program and the Self-Sufficiency Program.

Energy Assistance Program (EAP)

EAP is designed to assist low-income households in meeting their energy needs. We help pay heating and electric bills for those who qualify. EAP is for any household at 150% of the poverty level, as calculated within the past 30 days.

Self-Sufficiency Program (CSBG)

For qualifying families, we provide one-on-one coaching and assistance to help households increase their job skills, education, and wages. Case Management services, for low-income residents, are designed to eliminate poverty and foster self-sufficiency. Our trained case management professionals guide and support clients to successful outcomes, such as obtaining employment, education, and budget training.



CSBG Program Data

- **2,970 total clients served**
- **1,345 households served**
- **4 clients transitioned out of poverty**

CSBG Client Data

- *1,912 female / 1,053 male clients*
- *688 clients are seniors*
- *700 clients have a disabling condition*
- *373 clients are employed*
- *818 clients are unemployed*
- *464 of clients are retired*

Energy

- 2,266 clients served
- \$1.2 million paid to utility companies



Head Start

Head Start is a comprehensive child and family development program that prepares children from birth to five years of age to become successful school students and members of society. We operate our Head Start program out of 11 centers across Williamson and Burnet Counties, providing tools and resources to both the children and their families.



Head Start's primary goal is to prepare children to be school-ready so they can seamlessly transition to kindergarten. Each child works toward individual goals; therefore, our teachers can adapt their lessons and interactions based on a child's individual needs. Our children learn vocabulary, language, numbers, colors, shapes, and much more. They also learn social skills by engaging with other children in the classroom and on the playground. Additionally, Head Start monitors children's health by keeping them up-to-date on immunizations, dental care, and medical checkups. The program also provides breakfast, lunch, and a snack to all children, Monday through Friday, as well as additional food items for the weekends as needed.

2023-2024 School Year

495

TOTAL STUDENTS ENROLLED

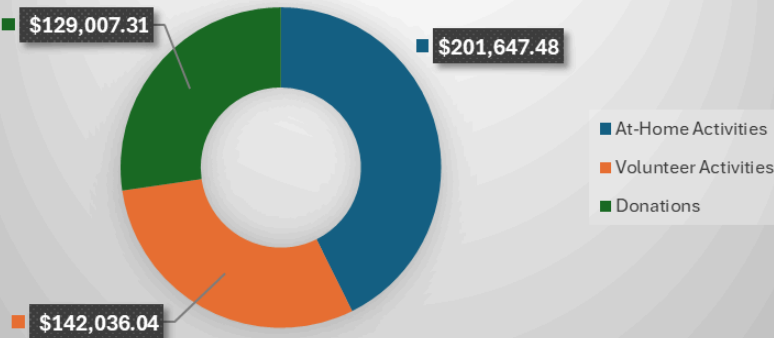
248

EARLY HEAD START

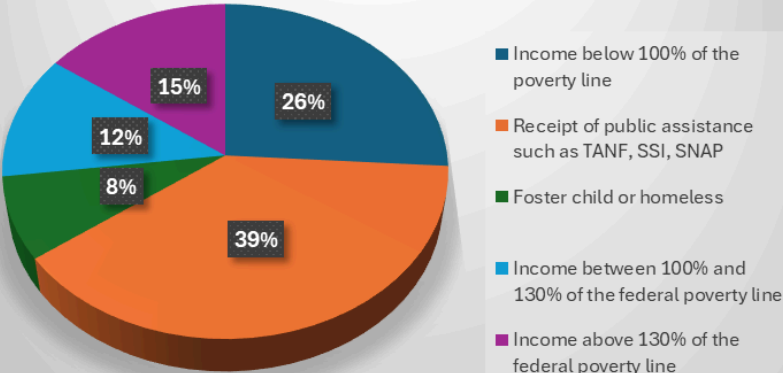
247

HEAD START

In-Kind Donation Totals



Meeting the Needs of at Risk Families



Meals on Wheels

The Senior Nutrition services offered through Meals on Wheels become increasingly meaningful as our senior population continues to grow. In 2024 alone, we served over 1,600 clients. As the area's senior nutrition program, we provide hot, noontime meals to seniors in need 5 days a week, 52 weeks a year.

Meals on Wheels helps enable seniors to remain living independently for as long as possible. Meals are delivered by our devoted community champions who offer a human connection for seniors who are often isolated and lonely. For many seniors, these wonderful community champions may be the only people they see on a consistent basis. Therefore, community champions also provide a daily wellness check and can alert staff to any needs or concerns.



By the Numbers



259,831
Meals Served



1,698
Seniors Served



850+
Community
Champions



24,000+
Champion Hours



Did You Know?

\$8 feeds a senior for 1 day

\$40 feeds a senior for 1 week

\$160 feeds a senior for 1 month

Pay for Meals



Development

The Development department at OWBC has many functions, including grant writing, fundraising, managing in-kind donations, and developing community outreach opportunities.

Reinventing our Fundraisers

In 2024, the Development department flourished, raising a record amount of funds through multiple campaigns.

Fundraising Campaigns

Amplify Austin	\$17,451
Sip & Shop Fundraiser	\$32,000
WHO Fundraiser	\$103,420
Clay Shoot Fundraiser	\$31,326
Year-End Giving	\$43,382
Total	\$227,579

**includes matching funds*



Marketing & Development Staff

MARK YOUR CALENDARS



8TH ANNUAL CLAY SHOOT

🕒 Friday, September 26, 2025 9AM-2PM

📍 Reunion Ranch
850 Co Rd 255, Georgetown



MAY 2026

LAKESIDE PAVILION | MARBLE FALLS

Thank you to our Community Partners



















Board of Directors

Since 1968, local Community Action Agencies have been required to have tripartite governing boards to gain and retain designation as eligible entities receive Community Services Block Grant (CSBG) funding. Our board is one-third democratically-selected representatives of the target-income communities, one-third local elected officials (or their representatives), and the remaining members are from major groups and interests in the community.

Our board is responsible for ensuring we continue to assess and respond to causes and conditions of poverty in Williamson and Burnet Counties, achieve anticipated family and community outcomes, and remain administratively and fiscally sound.

Executive Committee

Fernando Albornoz

Chair - Burnet County (Public)

Albornoz & Associates

Pastor Donna Shaw

Vice-Chair - Burnet County (Target Rep.)

Weak Day Ministries

Commissioner Terry Cook

Secretary - Williamson County (Public)

WilCo. Commissioner

Michael Sprott

Treasurer - Williamson County (Private)

Rbank - VP Commercial Lender

Judge Frank Reilly

Member At Large - Burnet County
(Public)

Potts & Reilly, LLP / Municipal Judge

Lorraine Brady - Williamson County

Nancy Alderman - Williamson County

Susan Doyle - Burnet County

Londa Chandler - Burnet County

Elaine Sullivan - Williamson County

Kelly Dix - Burnet County

Tracy Waters - Williamson County

Our Locations

Senior Nutrition

Allen R. Baca Senior Center

301 W. Bagdad Ave., Bldg. 2
Round Rock, TX 78664
(512) 255-4970

Bagdad Activity Center

351 N. Bagdad Rd.
Leander, TX 78641
(512) 259-0288

Burnet County MOW

3410 N U.S. Hwy 281
Marble Falls, TX 78654
(512) 641-3500

Madella Hilliard Senior Center

803 W. 8th St.
Georgetown, TX 78626
(512) 863-5010

Sunrise Senior Center

602 N. Wood St.
Burnet, TX 78611
(512) 715-9717

Taylor Senior Center

1301 W. 4th St.
Taylor, TX 76574
(512) 352-5539

Head Start

Bartlett Head Start

602 W. Clark St.
Bartlett, TX 76511
(254) 527-4645

Bertram Head Start

2332 CO Rd. 252
Bertram, TX 78605
Coming Soon

Burnet Head Start

602 N. Wood St.
Burnet, TX 78611
(512) 756-4777

Florence Head Start

203 Adams St.
Florence, TX 76527
(254) 793-9495

Harris-Ross Head Start

303 Ferguson St.
Taylor, TX 76574
(512) 365-1070

Hutto Head Start

80 Mager Ln.
Hutto, TX 78634
(512) 642-3144

Leander Head Start

396 Municipal Dr.
Leander, TX 78641
(512) 570-0480

Marble Falls Head Start/ISD

901 Ave. U
Marble Falls, TX 78654
(830) 798-3674

Mary Bailey Head Start

601 N. College St.
Georgetown, TX 78626
(512) 863-5259

Rawleigh Elliott Early Head Start

103 Holly St.
Georgetown, TX 78626
(512) 864-9733

Round Rock Head Start

1001 E. Main St.
Round Rock, TX 78664
(512) 255-4536

Get Involved

Donate

Our agency, specifically our Meals on Wheels program, runs on donations. Give now!



Volunteer

We're always in need of community champions to assist in classrooms or with meal deliveries.



Subscribe

Join our email list and receive our quarterly newsletter to learn more about upcoming events and fundraisers



Follow Us

Follow our Facebook page to see what's new and what we're doing in the community!

